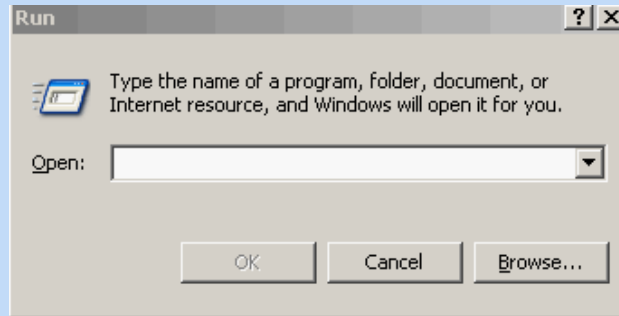


Complete List of Run Commands in Windows XP, Vista, 7, 8 & 8.1



¶ People can get stuck if they are attacked with viruses or in any way can't access different Applications in Windows. Sometimes it gets difficult to find the commands to start the applications directly. Knowing the Run Command for a program in different Windows versions can be very useful. if you'd like to start a program from a script file or if you only have access to a command line interface this can be helpful.

For example, If you have Microsoft Word installed (Any version of Microsoft Office®) rather than searching or clicking the start icon, locating the Microsoft Office folder and then clicking the Microsoft Word. You can use the Windows Run Box instead to access the application directly. Just Click Start and Click Run or press **"Window Key + R"** and type **"Winword"** and press enter, Microsoft Word will open immediately.

Here is a, hopefully, Complete list of RUN Commands in Windows XP, Vista, 7, 8 and 8.1 for your quick and easy access.

Description of Applications	Run Command
32-bit ODBC driver under 64-bit platform = C:\windows\sysWOW64\	odbcad32.exe
64 bit ODBC driver under 64-bit platform = C:\windows\system32\	odbcad32.exe
Accessibility Controls	access.cpl
Accessibility Options	control access.cpl
Accessibility Wizard	accwiz

Adapter Troubleshooter (Vista/Win7)	AdapterTroubleshooter	2
Add Features to Windows 8 Win8	windowsanytimeupgradeui	
Add Hardware Wizard Win8	hdwwiz	
Add New Hardware Wizard	hdwwiz.cpl	
Add/Remove Programs	appwiz.cpl	
Add/Remove Programs (Add New Programs)	control appwiz.cpl,,1	
Add/Remove Programs (Add Remove Windows Components)	control appwiz.cpl,,2	
Add/Remove Programs (Set Program Access & Defaults)	control appwiz.cpl,,3	
Administrative Tools	control admintools	
Administrative Tools control	admintools	
Adobe Acrobat (if installed)	acrobat	
Adobe Designer (if installed)	acrodist	
Adobe ImageReady (if installed)	imageready	
Adobe Photoshop (if installed)	photoshop	
Advanced Startup Options Win8	bootim	
Advanced User Accounts Control Panel (Vista/Win7/Win8)	Netplwiz	
Assembly language programming tool	debug	
Authorization Manager (Vista/Win7)	azman.msc	
Authorization Manager Win8	azman	
Automatic Updates	wuauclpl.cpl	
Backup and Restore Status & Utility (Vista/Win7/Win8)	sdclt	
Bluetooth Transfer Wizard	fsquirt	
Buy a Product Key Online Win8	purchasewindowslicense	
C: Drive	c:	
Calculator	calc	
Certificate Manager	certmgr.msc	
Certificates Win8	certmgr OR certlm	

Change Computer Performance Settings Win8	systempropertiesperformance	3
Change Data Execution Prevention Settings Win8	systempropertiesdataexecutionprevention	
Change Printer Settings Win8	printui	
Character Map	charmap	
Check Disk Utility (XP) / Repair damaged files	chkdsk	
ClearType Tuner Win8	cttune	
Color Management	colorcpl	
Command Prompt	cmd	
Compare Files	comp	
Component Services Win8	comexp	
Computer Management (Vista/Win7)	CompMgmtLauncher	
Computer Management (XP)	compmgmt.msc	
Computer Management Win8	compmgmt	
Computer Management Win8	compmgmtlauncher	
Configuration to edit startup files	msconfig	
Connect to a Network Projector Win8	netproj1	
Connect to a Projector Win8	displayswitch	
Control Panel	control	
Control Panel	control	
Create a shared folder Wizard (Vista/Win7/Win8)	shrpwb	
Create a System Repair Disc (Vista/Win7/Win8)	recdisc	
Credential (passwords) Backup and Restore Wizard (Vista/Win7/Win8)	credwiz	
Date and Time Properties	timedate.cpl	
DCOM user security / Component Services	dcomcnfg	
DDE Shares	ddeshare	
Default Location Win8	locationnotifications	
Device Manager	devmgmt.msc	
Device Manager Win8	devmgmt	

Device Pairing Wizard Win8	devicepairingwizard	4
Digitizer Calibration Tool Win8	tabcal	
Direct X Control Panel (If Installed)*	directx.cpl	
Direct X Troubleshooter	dxdiag	
DirectAccess Properties Win8	daprop	
DirectX Diagnostic Tool Win8	dxdiag	
DirectX Diagnostic Utility	dxdiag	
Disk Defragment	dfrg.msc	
Disk Defragmenter (Vista)	dfrgui	
Disk Defragmenter (XP)	dfrg.msc	
Disk Defragmenter / Defragmentation tool	defrag	
Disk Defragmenter Win8	dfrgui	
Disk Management	diskmgmt.msc	
Disk Management Win8	diskmgmt	
Disk Partition Manager	diskpart	
Display all active network connections	netstat	
Display Color Calibration Win8	dccw	
Display full path to the command processor (cmd.exe)	%ComSpec%	
Display IP configuration	wiipcfg	
Display logon server credentials	%LogonServer%	
Display Properties	desk.cpl	
Display Properties (Appearance tab)	control color	
Display Properties (Themes tab)	control desktop	
Display stats and current connections using NetBios over TCP/IP	nbtstat	
Display Switch Win8	displayswitch	
Display various system information in text console	systeminfo	
Display Win8	dpiscaling	
DPAPI Key Migration Wizard Win8	dpapimig	

Dr. Watson System Troubleshooting Utility	drwtsn32	
Driver Package Installer (Vista/Win7)	dpinst	5
Driver Verifier Manager Win8	verifier	
Driver Verifier Utility	verifier	
DVD Player	dvdplay	
Ease of Access Center Win8	utilman	
EFS REKEY Wizard Win8	rekeywiz	
Encrypting File System REKEY Wizard – Manage Your File Encryption Certificates Win8	rekeywiz	
Event Viewer	eventvwr.msc	
Event Viewer Win8	eventvwr	
Fax Cover Page Editor Win8	fxscover	
File History Win8	filehistory	
File Signature Verification Tool	sigverif	
Files and Settings Transfer Tool	migwiz	
Findfast	findfast.cpl	
Findfast	findfast.cpl	
Firefox (if installed)	firefox	
Firewall Control Panel (Vista/Win7)	FirewallControlPanel	
Firewall Settings (sp2)	firewall.cpl	
Firewall Settings (Vista/Win7)	FirewallSettings	
Flash Player Settings Manager Win8	flashplayerapp	
Folder Sharing Management	fsmgmt.msc	
Folders Properties	control folders	
Font Viewer Win8	fontview2	
Fonts	control fonts	
Fonts Folder	fonts	
Free Cell Card Game	freecell	
ftp.exe program	ftp	

Game / Joystick Controllers	joy.cpl	6
Graphical font viewer	fontview	
Group Policy (XP Pro only)	gpedit.msc	
Hard Drives Disk Cleanup Utility	cleanmgr	
Hearts Card Game	mshearts	
Help and Support	helpctr	
Hyperterminal	hypertrm	
IEExpress – Turn a cmd/vbs script into an installer .exe file	C:\Windows\System32\iexpress.exe\	
Iexpress Wizard	iexpress	
Import to Windows Contacts Win8	wabmig3	
Indexing Service	ciadv.msc	
Install or Uninstall Display Languages Win8	lusrmgr	
Internet Connection Wizard	icwconn1	
Internet Explorer Win8	iexplore3	
Internet Information Services	iis.msc	
Internet Properties	inetcpl.cpl	
Internet Setup Wizard	inetwiz	
IP Configuration	ipconfig	
IP Configuration (Delete DNS Cache Contents)	ipconfig /flushdns	
IP Configuration (Display Connection Configuration)	ipconfig /all	
IP Configuration (Display DHCP Class ID)	ipconfig /showclassid	
IP Configuration (Display DNS Cache Contents)	ipconfig /displaydns	
IP Configuration (Modifies DHCP Class ID)	ipconfig /setclassid	
IP Configuration (Refreshes DHCP & Re-Registers DNS)	ipconfig /registerdns	
IP Configuration (Release All Connections)	ipconfig /release	
IP Configuration (Renew All Connections)	ipconfig /renew	
iSCSI Initiator Configuration & Properties Tool (Vista/Win7/Win8)	iscsicpl	

ISDN Configuration Wizard	cfgwiz32	7
Java Control Panel (If Installed)	javaws	
Java Control Panel (If Installed)	jpgicpl32.cpl	
Keyboard Properties	control keyboard	
Keyboard Properties	main.cpl keyboard	
Kill processes using command line interface	taskkill	
Language Pack Installer (Vista/Win7/Win8)	lpksetup	
Local Group Policy Editor Win8	gpedit	
Local Security Policy Win8	secpol	
Local Security Settings	secpol.msc	
Local Users and Groups	lusrmgr.msc	
Location Activity Win8	locationnotifications	
Logs You Out Of Windows	logoff	
Malicious Software Removal Tool Win8	mrt	
Math Input Panel Win8	mip3	
Microsoft Access (if installed)	msaccess	
Microsoft Chat	winchat	
Microsoft Command-line Loader for Java classes	jview	
Microsoft Excel (if installed)	excel	
Microsoft Frontpage (if installed)	frontpg	
Microsoft Malicious Software Removal Tool	mrt	
Microsoft Management Console	mmc	
Microsoft Movie Maker	moviemk	
Microsoft Narrator	narrator	
Microsoft Paint	mspaint	
Microsoft Powerpoint (if installed)	powerpnt	
Microsoft Powerpoint*	powerpnt	
Microsoft Support Diagnostic Tool Diagnostics Troubleshooting (Vista/Win7/Win8)	msdt	

Microsoft Synchronization Center + Tool	mobsync	8
Microsoft System Information Utility	msinfo32	
Microsoft Word (if installed)	winword	
Minesweeper Game	winmine	
Mouse Properties	control mouse	
Mouse Properties	main.cpl	
MS-Dos Editor	edit	
MSN Messenger*	msnmsgr	
NAP Client Configuration Win8	napclcfg	
Nero (if installed)	nero	
Net Configurations	mscorcfg.msc	
Netmeeting	conf	
Network Connections	control netconnections	
Network Connections	ncpa.cpl	
Network Properties	ncpl.cpl	
Network Setup Wizard	netsetup.cpl	
New Scan Wizard Win8	wiaacmgr	
Notepad (Vista/Win7/Win8)	notepad	
Nview Desktop Manager (If Installed)	nvtuicpl.cpl	
Object Packager	packager	
ODBC Data Source Administrator	odbcad32.cpl	
ODBC Data Source Administrator (Vista/Win7/Win8)	odbcad32	
ODBC Driver Configuration Win8	odbcconf	
On-Screen Keyboard (Vista/Win7/Win8)	osk	
Open All User's Profile	%AllUsersProfile%	
Open Application Data folder of the logged-in user	%AppData%	
Open Common Files directory	%CommonProgramFiles%	
Open home drive e.g. C:\	%HomeDrive%	

Open Program Files directory (installed programs of Windows and others)	%ProgramFiles%	9
Open Recycle Bin	shell:recyclebinfolder	
Open Temporary File folder	%Temp%	
Open the drive where the system folder is placed	%SystemDrive%	
Open user's home folder	%HomePath%	
Open User's Profile	%UserProfile%	
Open Windows directory	%WinDir%	
Open Windows folder	%SystemRoot%	
Opens AC3 Filter (If Installed)	ac3filter.cpl	
Outlook Express	msimn	
Paint	pbrush	
Password Properties	password.cpl	
Performance Monitor (Vista/Win7/Win8)	perfmon	
Phone and Modem Options	telephon.cpl	
Phone Dialer	dialer	
Phone Dialer	dialer	
Pinball Game	pinball	
Power Configuration Management	powercfg.cpl	
Presentation Settings Win8	presentationsettings	
Print Management Win8	printmanagement	
Printer Migration Win8	printbrmui	
Printer User Interface Win8	printui	
Printers and Faxes	control printers	
Printers Folder	printers	
Private Character Editor	eudcedit	
Protected Content Migration Win8	dpapimig	
Quicktime (If Installed)	QuickTime.cpl	
Quicktime Player (if installed)	quicktimeplayer	

Real Player (if installed)	realplay	10
Record program crash & snapshots	drwatson	
Recovery Drive Win8	recoverydrive	
Reduced version of Taskkill from Windows XP Home	tskill	
Refresh Your PC Win8	systemreset	
Regional Settings	intl.cpl	
Register/de-register DLL/OCX/ActiveX	regsvr32	
Registration wizard	regwiz	
Registry Editor	regedit	
Registry Editor	regedit32	
Registry Editor Win8	regedt324	
Reliability and Performance Monitor	perfmon.msc	
Remote Access Phonebook Win8	rasphone	
Remote Desktop	mstsc	
Remote Desktop Connection Win8	mstsc	
Removable Storage	ntmsmgr.msc	
Removable Storage Operator Requests	ntmsoprq.msc	
Resource Monitor Win8	resmon OR perfmon /res	
Resultant Set of Policy (XP Pro only)	rsop.msc	
Resultant Set of Policy Win8	rsop	
Return Computer's name	hostname	
Return your local DNS server	nslookup	
Scanners and Cameras	sticpl.cpl	
Scheduled Tasks	control schedtasks	
Securing the Windows Account Database Win8	syskey	
Security Center (sp2)	wscui.cpl	
Send data to a specified host/IP	ping	
Services Win8	services	

Set Program Access and Computer Defaults Win8	computerdefaults	11
Shared Folders Win8	fsmgmt	
Sharing Session	rtcshare	
Show hostname	cmd /k hostname	
Show IP Config	cmd /ipconfig	
Shut Down Windows	shutdown	
Simple chat program for Windows networks	winchat	
Snipping Tool Win8	snippingtool	
Software Licensing User Information /Activation (Vista/Win7/Win8)	slui	
Sound Properties	mmsys.cpl sounds	
Sound Recorder	sndrec32	
Sound Recorder (Vista/Win7/Win8)	soundrecorder	
Sound Volume Mixer (Vista/Win7/Win8)	sndvol	
Sounds and Audio Device Properties	mmsys.cpl	
Spider Solitaire Card Game	spider	
SQL Server Client Configuration Network Utility	cliconfg	
Steps Recorder Win8	psr	
Sticky Notes Win8	stikynot	
Sync Center Win8	mobsync	
System Configuration Editor	sysedit	
System Configuration Editor for system startup files (config.sys, autoexec.bat, win.ini, etc.)	sysedit	
System Configuration Editor Win8	sysedit5	
System Configuration Utility Win8	msconfig	
System File Checker Utility (Purge File Cache)	sfc /purgecache	
System File Checker Utility (Return to Default Setting)	sfc /revert	
System File Checker Utility (Scan Immediately)	sfc /scannow	
System File Checker Utility (Scan On Every Boot)	sfc /scanboot	

System File Checker Utility (Scan Once At Next Boot)	sfc /scanonce	12
System File Checker Utility (Scan/Purge)	sfc	
System File Checker Utility (Set Cache Size to size x)	sfc /cachesize=x	
System Properties	sysdm.cpl	
System Properties (Advanced Tab) Win8	systempropertiesadvanced	
System Properties (Computer Name Tab) Win8	systempropertiescomputername	
System Properties (Hardware Tab) Win8	systempropertieshardware	
System Properties (Remote Tab) Win8	systempropertiesremote	
System Properties (System Protection Tab) Win8	systempropertiesprotection	
System Properties (Vista/Win7)	SystemPropertiesAdvanced, SystemPropertiesComputerName, SystemPropertiesDataExecutionPrevention, SystemPropertiesHardware, SystemPropertiesPerformance, SystemPropertiesProtection, SystemPropertiesRemote	
System Restore Win8	rstrui	
System Services	services.msc	
Task Manager (Vista/Win7/Win8)	taskmgr	
Task Manager Win8	launchtm	
Task Scheduler Win8	taskschd	
TCP Tester	tcptest	
Telnet Client	telnet	
Touch Keyboard and Handwriting Panel Win8	tabtip3	
Trace and display all paths required to reach an internet host	tracert	
Trusted Platform Module (TPM) Management Win8	tpm	
Trusted Platform Module Initialization Wizard (Vista/Win7)	TpmInit	
Tweak UI (if installed)	tweakui	
User Account Control Settings Win8	useraccountcontrolsettings	
User Account Management	nusrmgr.cpl	
User Accounts (Autologon)	control userpasswords2	

Utility Manager	utilman	13
Version Reporter Applet Win8	winver	
Volume control for soundcard	sndvol32	
Windows Address Book	wab	
Windows Address Book Import Utility	wabmig	
Windows Anytime Upgrade Results Win8	windowsanytimeupgraderesults	
Windows Backup Utility (if installed)	ntbackup	
Windows Clipboard viewer	clipbrd	
Windows Contacts Win8	wab3	
Windows Disc Image Burning Tool Win8	isoburn	
Windows Easy Transfer Win8	migwiz3	
Windows Error Reports	wercon	
Windows Explorer	explorer	
Windows Fax and Scan Win8	wfs	
Windows Features (Vista/Win7/Win8)	optionalfeatures	
Windows Firewall	firewall.cpl	
Windows Firewall with Advanced Security (Vista/Win7)	wf.msc	
Windows Firewall with Advanced Security Win8	wf	
Windows Help and Support Win8	winhlp32	
Windows Image Acquisition (scanner)(Vista/Win7)	wiaacmgr	
Windows Internet Explorer	iexplore	
Windows Journal Win8	journal3	
Windows Magnifier	magnify	
Windows Management Infrastructure	wmimgmt.msc	
Windows Media Player Win8	dvdplay	
Windows Media Player Win8	wmplayer3	
Windows Media Player	wmplayer	
Windows Memory Diagnostic Scheduler Win8	midsched	

Windows Messenger	msmsgs	14
Windows Mobility Center (Mobile PCs only)(Vista/Win7)	mblctr	
Windows Picture Acquisition Wizard Win8	wiaacmgr	
Windows Picture Import Wizard (need camera connected)	wiaacmgr	
Windows PowerShell ISE Win8	powershell_ise	
Windows PowerShell Win8	powershell	
Windows Remote Assistance (Vista/Win7/Win8)	msra	
Windows Script Host Settings (Vista/Win7/Win8)	wscript	
Windows Security Center	wscui.cpl	
Windows SmartScreen Win8	smartscreensettings	
Windows Store Cach Clear Win8	wsreset	
Windows System Security Tool	syskey	
Windows Update (Vista/Win7/Win8)	wuapp	
Windows Update Manager	wupdmgr	
Windows Update Standalone Installer (Vista/Win7/Win8)	wusa	
Windows Version (About Windows)	winver	
Windows Version (to show which version of windows)	winver	
Windows XP Tour Wizard	tourstart	
WMI Management Win8	wmimgmt	
WMI Tester Win8	wbemtest	
Wordpad	wordpad	
Wordpad (Vista/Win7/Win8)	write	
XPS Viewer Win8	xpsrchvw	

I didn't make this list but [Naveed A Lodhi](#) did on September 1, 2013 and he said I could use it.